

# 6MP PTZ Autofocus Smart AI 30M IR Bullet POE IP Camera

## AirCam PTZB-630MAI

airlive®



|                  |                                |                                     |                         |                      |                              |
|------------------|--------------------------------|-------------------------------------|-------------------------|----------------------|------------------------------|
| 6MP<br>3072x2048 | Pan 0° ~ 180°<br>Tilt 0° ~ 55° | 2.8-12 mm<br>Motorized<br>AutoFocus | 30M IR<br>D-WDR         | Smart AI<br>Function | 48V<br>PoE                   |
| H.265<br>H.264   | 4x optical<br>zoom             | RTSP<br>OnVif                       | Built-in<br>Mic/Speaker | IP66<br>Waterproof   | Android IOS<br>APP Supported |

## Overview

Meet our 6MP Autofocus 30M PTZ IR PoE IP Camera, PTZB-630MAI — a state-of-the-art Smart AI surveillance solution. This camera boasts high-resolution imaging with autofocus precision and a robust 30-meter infrared capability for clear night vision. Featuring Pan-Tilt-Zoom (PTZ) functionality and Power over Ethernet (PoE) support, it offers versatile and straightforward monitoring options for a range of applications. Moreover, it is a Smart AI featured camera. Capture essential details effortlessly with this advanced IP camera, ensuring your security needs are met effectively.

## Features

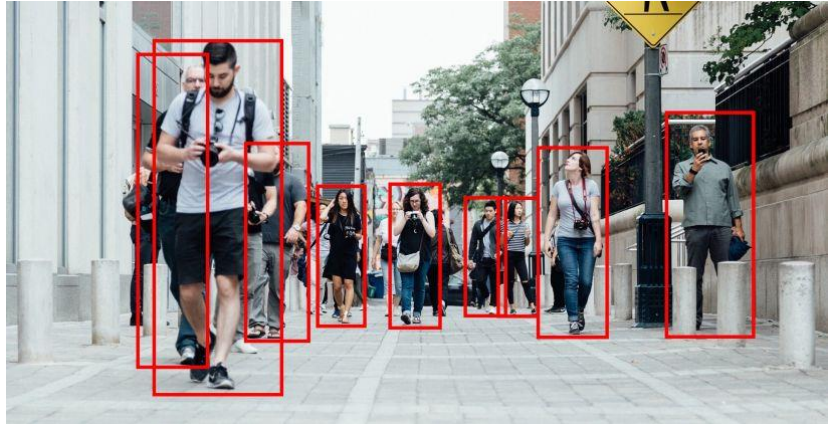
- High-Quality Imaging: Equipped with a 1/2.8" Sony CMOS sensor, delivering sharp 6MP HD resolution (3072 x 2048) output.
- Low Light Visibility: Excellent low-light performance with a minimum illumination of just 0.01Lux.
- Comprehensive Image Control: Features such as Day/Night, AWB/MWB, BLC, HLC, 2D/3D-DNR, Shutter, and IR-CUT for optimal image quality.
- Image Enhancement: D-WDR, Mirror, Rotate, and Defogging functions to improve image clarity.
- Customizable Overlays: Supports multiple Style OSD overlays, Motion Detection, and Privacy Mask for tailored surveillance.
- Compatibility: RTSP and Onvif 17.06 compatibility for integration with various third-party NVRs.
- Efficient Encoding: H.264/H.265 dual-stream media server for efficient video encoding.
- P2P Cloud Service: Easy-to-use P2P Cloud service for remote access.
- PTZ UTC control, 4x Optical zoom
- Powerful IR Illumination: Features 6pcs SMD Array IR LEDs with a 30-meter IR distance.
- Security Features: User authentication and video data encryption for enhanced data protection.
- Alarm Handling: Supports Alarm Snapshot to Email and FTP for immediate event notifications.
- Versatile Access: Multiple access options including various web browsers, PC client, and mobile app for remote monitoring.
- IEEE802.3af PoE support for convenient installation.
- Lightning Protection: Equipped with 4000V lightning protection for added durability.
- Weatherproof Design: Robust IP66-rated housing for strong water-proofing.
- Motorized Lens: 2.8-12mm motorized lens for flexible focal adjustments.
- Built-in Mic/Speaker

## IP Camera Smart AI feature - Smart Human/vehicle detection

Elevate your security with our AI-powered IP camera featuring advanced human and vehicle detection. This intelligent technology ensures accurate alerts, reducing false alarms. With precise identification, it enhances surveillance efficiency, making it ideal for safeguarding your premises. Stay one step ahead with smart, automated security.

### Smart AI –Human Detection

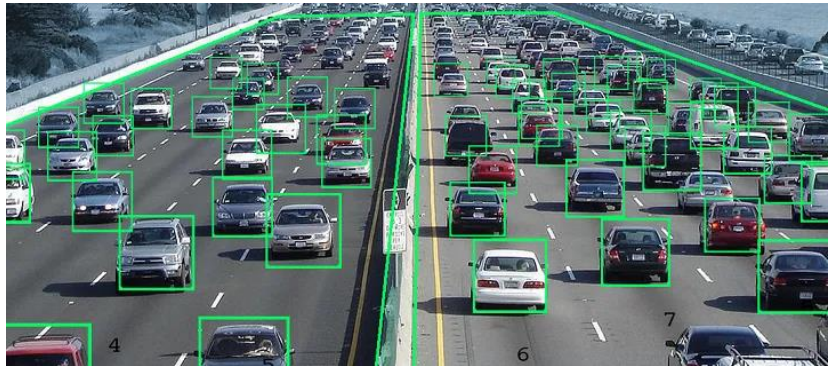
It uses advanced artificial intelligence and computer vision to identify and detect people in various scenarios, such as security, surveillance, retail, and entertainment.



### Smart AI Vehicle Detection for Car and other vehicles

Its mainly to identify and detect vehicles in various scenarios, such as traffic management, parking, toll collection, and security.

Smart AI aims to provide accurate, reliable, and efficient solutions for vehicle detection needs.



### The AirLive Smart AI IP Camera functions

Offers Intelligent Detection for selected Detect targets, making it able to detect different targets like, humans, vehicles and more. You will only receive an alarm when the select target is detected, other motion will not trigger the camera. Thus, giving you a more secure and smart security solution.

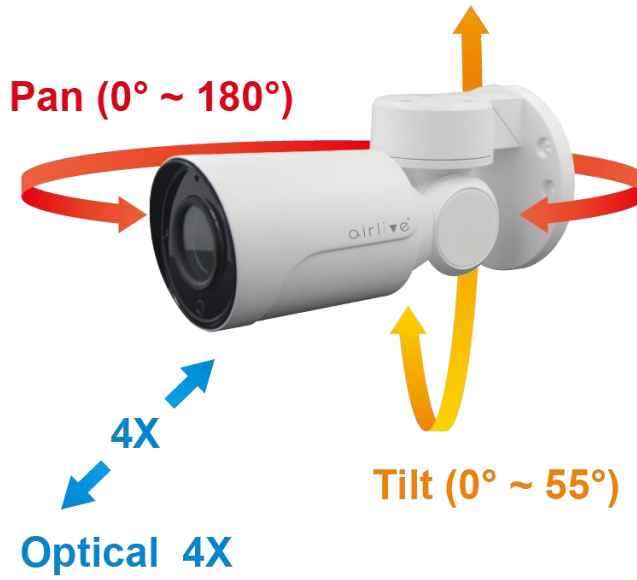
# 6MP PTZ Autofocus Smart AI 30M IR Bullet POE IP Camera

AirCam PTZB-630MAI

airlive®

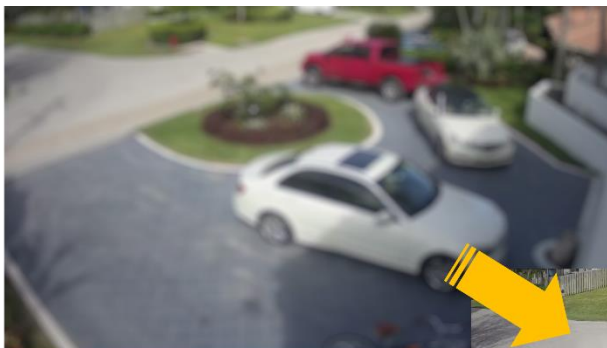
## PTZ

The AirCam PTZB-630MAI is a smart PTZ camera that can pan, tilt, and zoom automatically or remotely to capture different angles and details of a scene. PTZ control is done via the Webui of the camera (UTC), the PTZ function can also be controlled via the APP and the ANVR. The Smart PTZ camera can be used for streaming, web conferencing, broadcasting, security, and surveillance purposes.



## 2.8-12 mm Motorized Auto focus lens, 4x Optical Zoom

The AirCam PTZB-630MAI is equipped with a versatile 2.8-12mm motorized autofocus lens. This feature ensures precise focus adjustments, allowing for sharp and clear imagery without manual intervention. Enjoy effortless control over your surveillance, capturing every detail with ease and accuracy. Zoom in onto points of interest with the 4x Optical zoom.



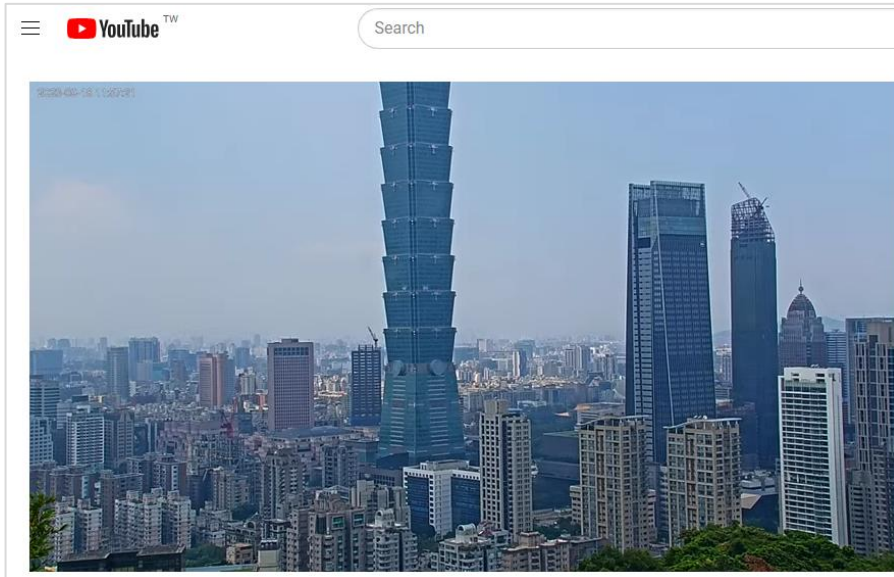
Auto Focus Lens

Get a sharp clear image



### Streaming your IP Camera to YouTube live

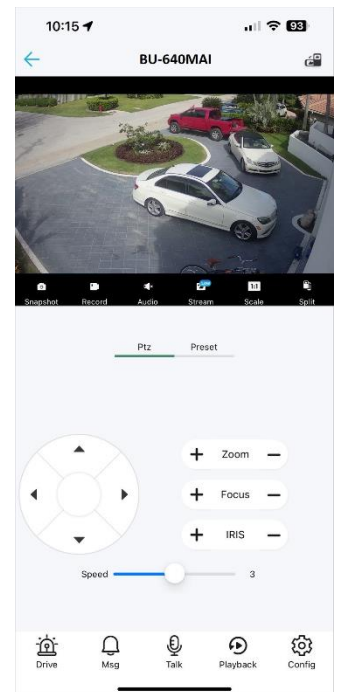
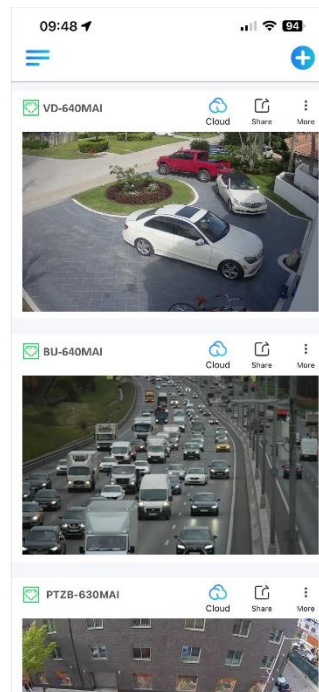
Streaming your IP camera to YouTube Live. Once configured, start the camera's live streaming function, and your surveillance feed will be broadcasted in real-time on your YouTube channel, allowing you to share or monitor events remotely with ease. This function can also be used to Live stream landmarks or other places of interest to a global audience and let people from all over the world enjoy your country.



### IP Camera Android/iOS App Support App Search VideoLink

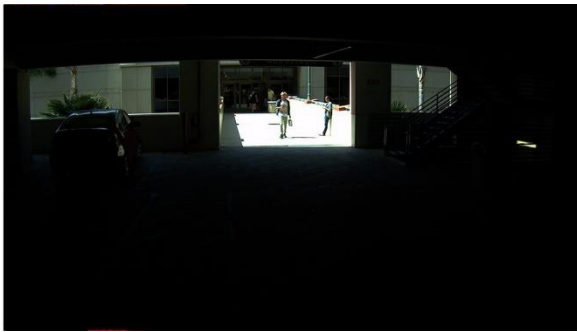
Our IP Camera boasts Android and iOS app support, providing convenient access to your surveillance system.

The user-friendly app, "VideoLink," allows you to effortlessly search and view video feeds. Stay connected and in control, monitoring your property from your mobile device with ease and convenience.



### Image Enhancement: D-WDR, Mirror, Rotate, and Defogging functions

The AirCam PTZB-630MAI takes image enhancement seriously, offering a suite of advanced features. Digital-Wide Dynamic Range (D-WDR) balances exposure, ensuring well-lit scenes in challenging lighting conditions. Additionally, it provides the ability to mirror and rotate images as needed, enhancing flexibility in surveillance placement. Furthermore, the integrated Defogging function improves visibility in misty or foggy environments, ensuring that you get clear, detailed footage regardless of adverse weather conditions. These features collectively enhance the camera's performance and its suitability for various monitoring scenarios.



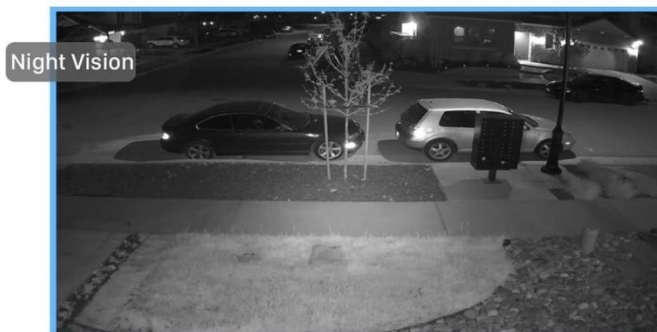
WDR OFF



WDR ON

### AirCam PTZB-630MAI 6pcs SMD Array IR LEDs with a 30-meter IR distance

The AirCam PTZB-630MAI is equipped with 6 pcs SMD Array IR LEDs, delivering powerful infrared illumination. With an impressive 30-meter IR distance, it ensures exceptional night vision capabilities, providing clear and detailed surveillance footage even in complete darkness. Whether it's monitoring large outdoor areas or dimly lit spaces, this camera guarantees reliable 24/7 security coverage, making it a robust choice for various applications.



| Model   | AirCam PTZB-630MAI  |
|---|---|
| <p><b>Interface</b></p> <ul style="list-style-type: none"> <li>• <b>Network Interface:</b> PoE 802.3af 1x RJ45 10M/100M</li> <li>• <b>Media:</b> AirCam64, Android, IOS</li> <li>• <b>Onvif:</b> 17.06 compatible</li> <li>• <b>Standard:</b> HTTP/RTSP/FTP/RTMP/SMTP/DHCP/NTP/NFS</li> </ul> <p><b>Camera</b></p> <ul style="list-style-type: none"> <li>• <b>Image Sensor :</b> 1/2.8" Sony CMOS</li> <li>• <b>CPU:</b> Sigmastar</li> <li>• <b>Effective Pixels :</b> 6 Megapixels</li> <li>• <b>Electronic Shutter :</b> Auto, 1/25s ~ 1/100000s</li> <li>• <b>Min. Illumination :</b> 0.01Lux@F1.2(AGC ON), 0Lux IR on</li> <li>• <b>Day/Night :</b> Auto/Color/(B/W)/Timing</li> <li>• <b>WDR :</b> Digital WDR</li> <li>• <b>White Balance :</b> Auto/Manual</li> <li>• <b>BLC /HLC :</b> Support</li> <li>• <b>DNR :</b> 2D/3D DNR</li> <li>• <b>Other :</b> AGC, Motion Detection, Privacy Mask, Flip, Mirror, Rotate, OSD Overlay</li> <li>• <b>Mechanical:</b> Waterproof IP66 Housing</li> </ul> <p><b>Encode</b></p> <ul style="list-style-type: none"> <li>• <b>Video Standard :</b> H.264/H.265/H.265+</li> <li>• <b>Video Resolution :</b> Main Stream: 25fps@6MP(3072x2048)/ 5MP(2592x1944)/ 4MP(2592x1520)/3MP, 30fps@1080P/720P<br/>Sub stream: 25fps@D1/VGA/360P/CIF, etc.</li> <li>• <b>Video Bitrates :</b> 64Kbps - 8Mbps, VBR/CBR</li> <li>• <b>Audio Standard :</b> G.711-u/G.711-a</li> <li>• <b>Built-in Mic/Speaker:</b> Yes</li> <li>• <b>OSD Overlay:</b> Title and Time overlay</li> <li>• <b>IR Led:</b> 6pcs SMD Array IR Led</li> <li>• <b>IR Distance:</b> 30 Meters</li> <li>• <b>FOV :</b> 1/2.8  123° x 101.9° x 53.2° ~ 38° x 33.1° x 18.6° (D x H x V) ±5%, 2.8~12mm</li> <li>• <b>Lens Focal length:</b> 2.8-12 mm Motorized lens</li> <li>• <b>Zoom:</b> 4x Optical Zoom</li> <li>• <b>Motion Detection:</b> Schedule/Detection area/Trigger Recording/Trigger Snapshot/Link Blink/Upload Alarm Centre/Trigger Audio</li> <li>• <b>Intelligent Detection:</b> Human/Car/Motorcycle/Bicycle/Day/Night/Draw Rect in Video/Target Detection Rect/Day Sensitivity/Detection Rect Blink/Light Blink/Trigger Audio</li> </ul> | <p><b>PTZ</b></p> <ul style="list-style-type: none"> <li>• <b>Pan/Tilt Range:</b> Pan: 0° ~ 180°; Tilt: 0° ~ 55°</li> <li>• <b>Preset Point:</b> 1</li> <li>• <b>Control Speed:</b> Pan: 0.5° ~ 20°/s; Tilt: 0.5° ~ 10°/s</li> <li>• <b>Guard Position :</b> Support</li> </ul> <p><b>Multiple Language</b></p> <ul style="list-style-type: none"> <li>• English/Chinese/Russian/Deutsch/Italiano/Türkiye/ Polski/Korean/Greek/Arabic/Japanese</li> </ul> <p><b>APP and Software Control</b></p> <ul style="list-style-type: none"> <li>• Windows: Web browser, AirCam64</li> <li>• iOS/Android: Download "Videolink" App from APP/Play Store)</li> <li>• *NVR APP iOS/Android: Download "Guard Viewer" App from APP/Play Store, (can be used when camera has been added to ANVR.)</li> </ul> <p><b>Power Input</b></p> <ul style="list-style-type: none"> <li>• Power Supply: 12V DC</li> <li>• Power Consumption: ≤10 W</li> <li>• PoE: 802.3af</li> </ul> <p><b>Environment</b></p> <ul style="list-style-type: none"> <li>• Operating temperature: -20°C ~ +60°C</li> <li>• Operating Humidity: 10% ~ 90% (non-condensing)</li> </ul> <p><b>Standard package of Camera</b></p> <ul style="list-style-type: none"> <li>• <b>Product size:</b> φ68 x 168mm, include. bracket<br/>Weight: ≤TBD</li> <li>• <b>Package size:</b> TBD cm(L*W*H)</li> <li>• <b>Package content:</b> IP Camera/Network cable/QIG/waterproof connector</li> </ul> <p><b>Ordering information</b></p> <ul style="list-style-type: none"> <li>• <b>AirLive PTZB-630MAI</b><br/>6MP PTZ Autofocus Smart AI 30M IR Bullet POE IP Camera</li> </ul> |

\* Specification will be changed without prior notice

\* All trademarks, logos and brand names are the property of their respective owners.

